

25 Beautiful KITCHENS

MORE REAL KITCHENS THAN ANY OTHER MAGAZINE

BRIGHT IDEAS

INSPIRATIONAL REAL-LIFE KITCHEN DESIGNS

ALL
UNIQUE
DESIGNS



Sept 2007
£3.75

BLUE SKY THINKING

Get in the light with
a conservatory kitchen

HOB HUNTING

Find the cooktop
that's right for you

Plan ahead

CREATE YOUR DREAM ROOM WITH OUR 3-STEP GUIDE

WIN AN MFI KITCHEN
WORTH UP TO
£6,000





Griggs & Mackay's pretty painted cabinetry has a rustic character that's enhanced by drawers and handles in solid oak. The island, painted in Farrow & Ball's String, doubles as a breakfast bar that's regularly used by Caroline and David's children. The Grace bar stools came from John Lewis

TRADITIONAL

perly — it makes family life so much more enjoyable



Two deep oak trays fit snugly into purpose-built recesses. They are conveniently situated beneath a plate rack and coordinate with the oak details used elsewhere in the scheme



“My favourite appliance is the range cooker. It can cope with

anything. There’s even a griddle on the hob, which is very popular at breakfast time”

Caroline Hughes

▲ Set into the chunky solid oak of the Island worktop is a small prep sink that Caroline finds useful for rinsing vegetables. Beside it, a slotted oak lid can be removed to provide access to a recycling bin, which is positioned underneath. This allows vegetable peelings to be easily swept away, leaving the work surface clean and clear



THE KITCHEN FILE

DESIGN & CABINETS

- John Mackay at **Griggs & Mackay**,
11 Church Road, Caversham, Reading RG4 7AA
(0118 946 1440) www.griggsandmackay.com
- Bespoke solid and painted oak

WORKTOPS

- Verde Marinese granite. Price per linear m **£552**
- Solid oak. Price per linear m **£317**

SINKS & TAPS

- Sudbury double-bowl farmhouse sink, Astracast **£289**
- LIN40R1 Lincoln single-bowl sink, Astracast **£179**
- 2 x Atlas monobloc mixer taps, Abode, each **£350**

APPLIANCES (shown)

- DB120 dual-fuel range cooker in stainless steel, Belling, approx **£2,100**

APPLIANCES (not shown)

- Built-in canopy extractor, Smeg **£80**
- Integrated undercounter larder fridge, Smeg **£280**
- Fully integrated dishwasher, Smeg **£700**

Coming up with any kitchen design requires imagination, but Caroline and David Hughes' scheme demanded more thought than most. 'Our home hadn't been built yet, so the possibilities were endless,' Caroline explains. 'We decided to focus on a design that wouldn't date, and as we were using oak for the joinery of the house, we thought it might be a good idea to incorporate the timber into the design. That way, the kitchen would blend in beautifully with the other rooms.'

The couple's preference for natural materials in a subtle, neutral palette led them to kitchen company Griggs & Mackay. Caroline and David loved designer John Mackay's simple yet elegant cabinetry, and were especially taken with his painted Shaker-style designs. After much deliberation they decided on cream-painted furniture, with oak used in decorative contrast as drawer fronts and as a worktop for the central island.

John's design is the ultimate combination of style and practicality. For example, the island's rounded edges not only look beautiful, but also prevent the Hughes' two children, Laura, seven, and Sam, three, from catching themselves on any sharp corners. Its curved form also prevents this large piece of furniture from dominating the room.

Storage was another important factor, and Caroline is thrilled with the pretty L-shaped cabinet that John has designed to house her cooking equipment, glassware and china. Glazed on three sides, shelves offer ample display space for decorative items, while everyday equipment is kept in the small cupboards at the base of the unit.

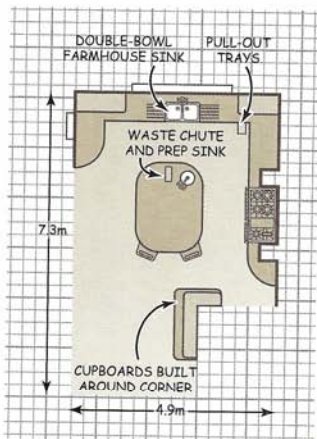
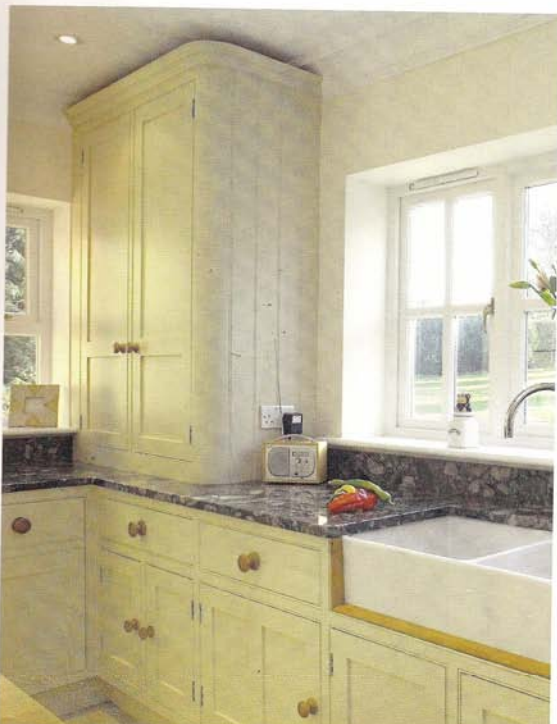
Caroline decided against having a large fridge in the room, instead opting for a small integrated model. 'We thought about having a side-by-side fridge freezer, but it would have distracted from the overall look,' she explains. 'Instead, we keep milk and other essentials in the kitchen, but store all our luxuries and frozen food in the utility room.'

However, when it came to the cooker, Caroline was keen to have a large range that would give her plenty of scope for entertaining. It's been given pride of place beneath an arched surround, and is just a stride from the island's generous workspace. 'This kitchen is fantastic,' Caroline smiles. 'It's great to have the space to be able to cook properly. It makes family life so much more enjoyable.'

BK

The L-shaped cabinet that wraps around an awkward corner is a great use of space. Its glass doors boost the cabinetry's traditional look and reflect light around the room

The bright and spacious feel afforded by the pale cabinets meant that Caroline could be adventurous with her choice of worktops. 'We used oak and this gorgeous Verde Marinese granite,' she says. 'Its different-coloured fragments remind me of precious stones'



Where to buy Abode 01226 283434 Astracast 01924 477466 Belling 0871 222 2635
 Formica & Bell 01202 876141 John Lewis 0845 604 9049 Smeg 0870 990 9908

GUIDE PRICE

- Cabinetry only **£30,000**